

Peninsula Booth

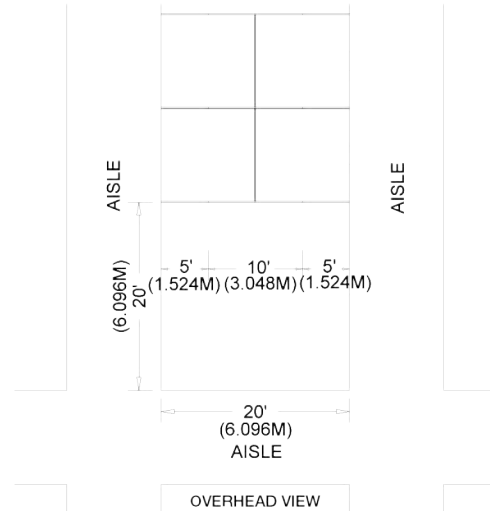
A Peninsula Booth is exposed to aisles on three (3) sides and composed of a minimum of four booths.

There are two types of Peninsula Booths:

- (a) one which backs up to Linear Booths
- (b) one which backs up to another Peninsula Booth as is referred to as a "Split Island Booth" (see following page for detailed description of this booth type)

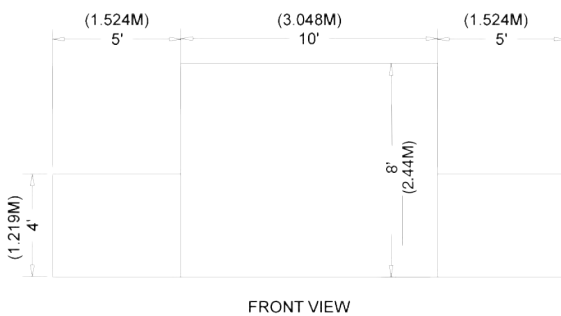
Dimensions

A Peninsula Booth is 20ft x 20ft (6.096m x 6.096m) or larger. When a Peninsula Booth backs up to two (2) Linear Booths, the back wall is restricted to 4ft (1.22m) high within 5ft (1.524m) of each aisle, permitting adequate line of sight for the adjoining Linear Booths. 8ft (2.44m) is the maximum height allowance, including signage for the center portion of the back wall.

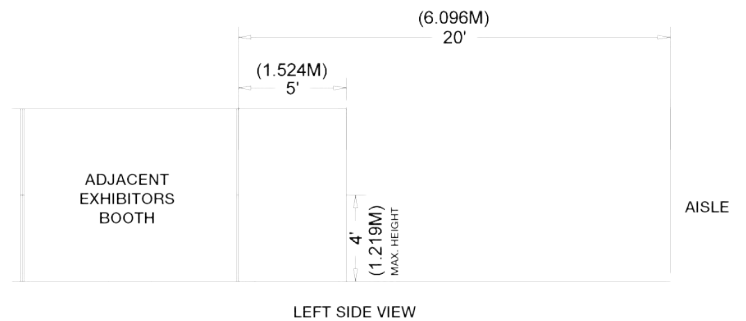


Overhead Signs

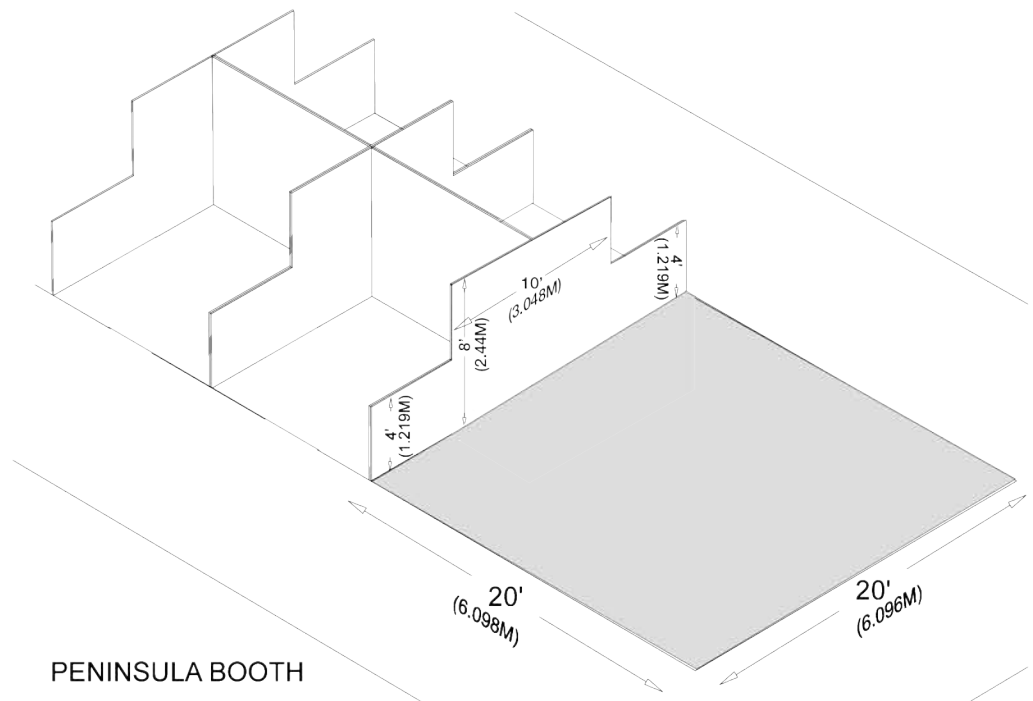
Overhead signs are permitted on booths 20ft x 20ft (6.096m x 6.096m) and larger.



FRONT VIEW



LEFT SIDE VIEW



PENINSULA BOOTH